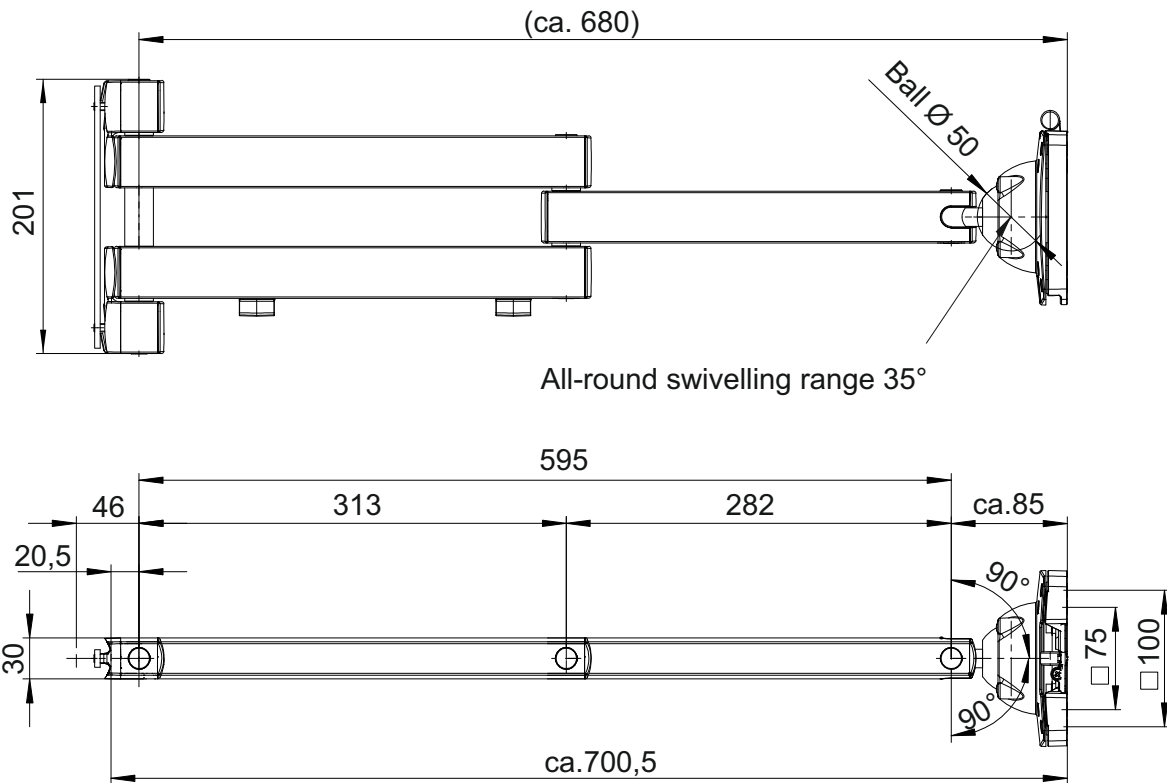




Monitor folding arm



Order no.:	509209		
Width (mm):	100		
Depth (mm):	700		
Height (mm):	201		
Net weight (kg):	1.80		

Description:
Monitor folding arm

for flexible attachment of a monitor in the system grooves of Rocholz profiles with perforation, on support column (509001,509002, 509006), on profile rail (509005) or upright adapter (509004), incl. cable holder

- VESA 75/100 quick-release attachment
- Load capacity 10 kg



Monitor folding arm

Order no.:	509209			
Number of packets:	1			
EAN:	4030177073831			
Size WxDxH (mm):	260x450x130			
Weight (kg):	2.50			

examples:
optional accessories



Keyboard and mouse platform with folding arm
Order no.: 509201



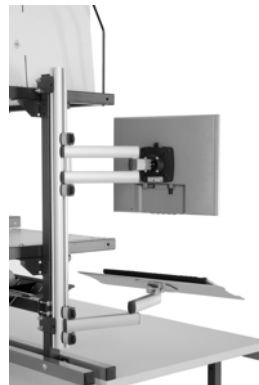
Monitor support carriage
Order no.: 509202



Monitor folding arm
Order no.: 509203



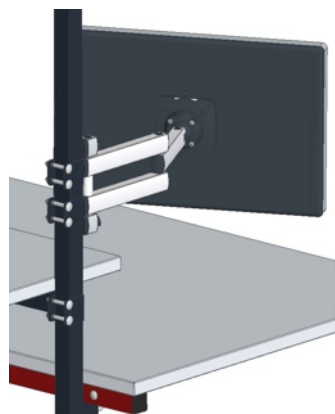
Support column with screw clamp
Order no.: 509002



Profile rail for PC folding arms
Order no.: 509005

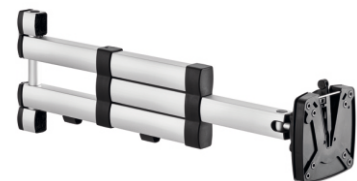


Monitor folding arm
Order no.: 509204

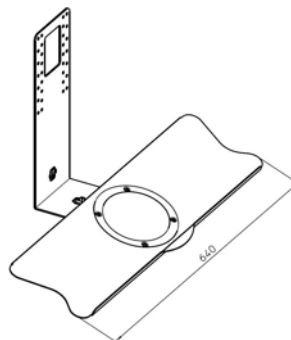


Upright adapter for attaching
509201, 509202, 509203
Ref.: 509003

Upright adapter for attaching
509204, 509207, 509209
Order no.: 509004



Monitor folding arm
Order no.: 509207



Adapter incl. keyboard holder for mounting on the screen folding arms
Order no.: 509205