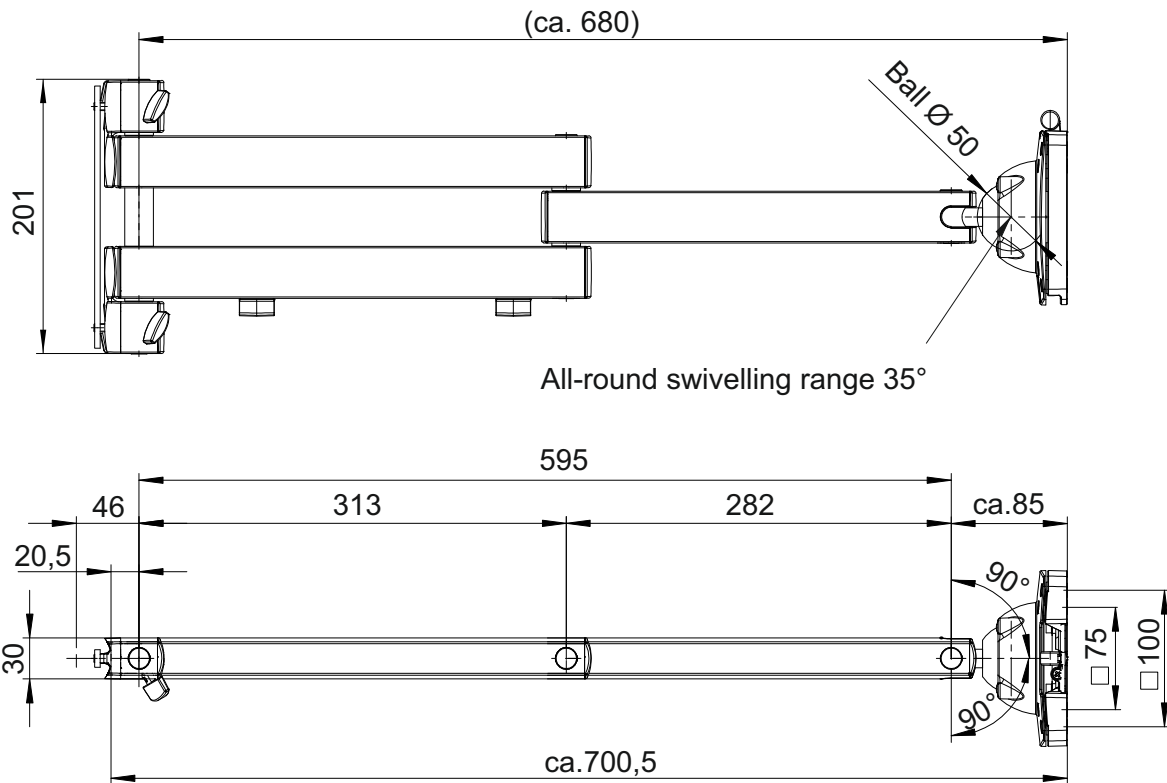




Screen folding arm XL



Order no.:	509209		
Width (mm):	100		
Depth (mm):	700		
Height (mm):	201		
Net weight (kg):	1.80		

Description:

The various screen folding arms, as well as the keyboard and mouse platform with folding arm, can be individually combined with the supporting column, upright adapters or profile rails. The fastening system allows monitors to be easily installed (they can be secured with fixing screws).

- for flexible attachment of a screen
- VESA 75/100 quick-release attachment
- load capacity 10 kg



Screen folding arm XL

Order no.:	509209			
Number of packets:	1			
EAN:	4030177073831			
Size WxDxH (mm):	260x450x130			
Weight (kg):	2.50			

examples:
optional accessories



Keyboard and mouse platform with folding arm
Order no.: 509201



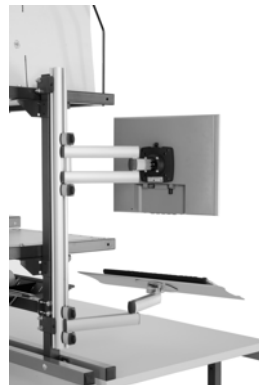
Screen support carriage
Order no.: 509202



Screen folding arm
Order no.: 509203



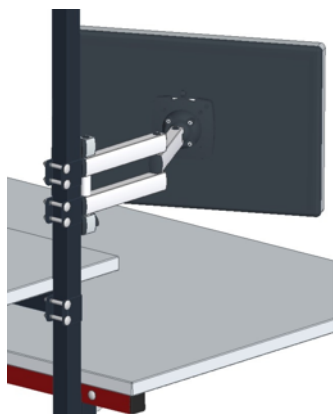
Support column with screw clamp
Order no.: 509002



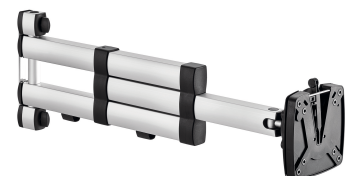
Profile rail for PC folding arms
Order no.: 509005



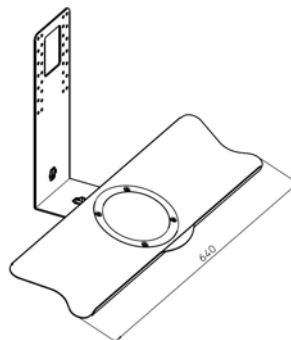
Screen folding arm
Order no.: 509204



Upright adapter for attaching
509201, 509202, 509203
Ref.: 509003



Screen folding arm
Order no.: 509207



Adapter incl. keyboard holder for mounting on the screen folding arms
Order no.: 509205